

Viking Rinse Bowl

5801V.RB Series



Overview

The Viking Rinse Bowl is used to dissolve and feed solid rinse products. It is used with Warewash dispensers to feed dish machines. The use of solids significantly reduces the packaging, shipping and handling of ready to use product.

Warnings



All installations must conform to local plumbing codes and use approved backflow prevention devices. A pressure indicating tee is to be installed with existing faucets according to local plumbing codes in the state of Wisconsin and any other state that requires the use of a pressure indicating tee.



ALWAYS WEAR PROTECTIVE CLOTHING AND EYEWEAR WHEN WORKING WITH CHEMICAL PRODUCTS.

Operational Requirements

	Minimum	Maximum
Water Pressure	15 psi (1.03 bar)	85 psi (5.86 bar)
Water Temperature	-	140°F (60°C)

Installation and Operation

1. Drill holes approximately 1" deep in wall, to match mounting holes in Bowl. If wall is tile or masonry, use 1/4" masonry bit.
2. Mount Bowl to wall using mounting screws and anchors provided. Bowl should be mounted below eye level if possible.
3. Attach wire harness to dispenser & secure.

NOTE: 24VDC coil is standard.

Connection to Water Supply

The water temperature should be kept below 140 degrees Fahrenheit.

1. Attach water inlet to bottom of valve.

Connection to Rinse Pump

On the bottom of the Solid Rinse Bowl in the reservoir, a 1/4" John Guest fitting has been attached to make the rinse pump connection. This fitting is to be connected to the suction side of the rinse pump with 1/4" plastic tubing. The reservoir will automatically fill the first time the detergent dispenser is turned on. The Solid Rinse Bowl will then keep some of the liquefied rinse additive in the reservoir at all times.

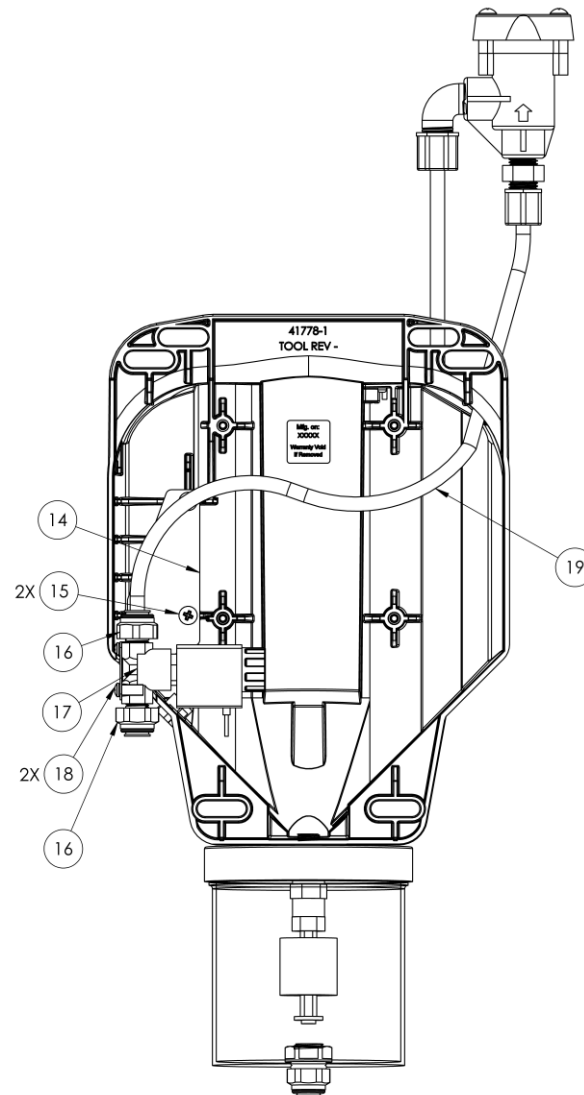
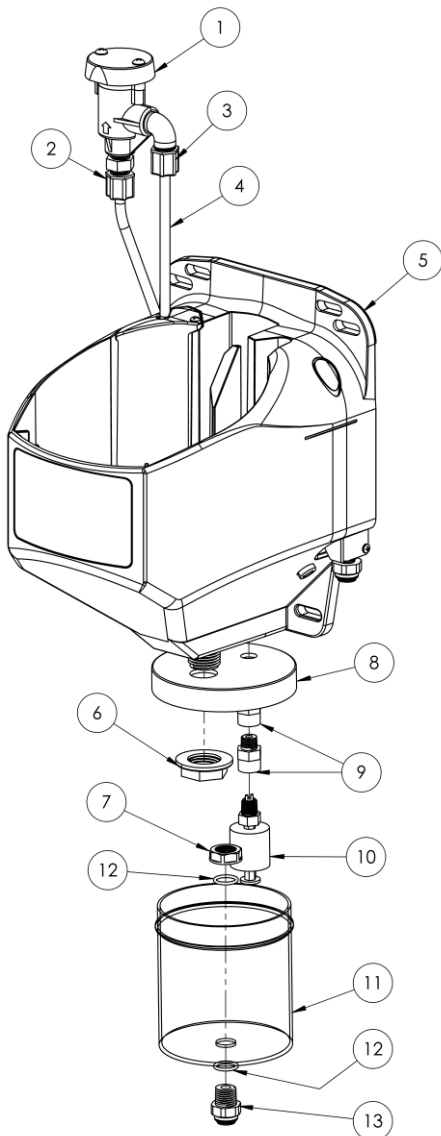
A level control switch (LCS) is used to automatically maintain the amount of rinse additive in the reservoir. At all times the level control switch will control the rinse additive level in the reservoir.

The detergent dispenser may call for the detergent numerous times after the reservoir is full, but no more product will be dissolved until the LCS senses that more is needed.

Replacement Parts

Item No.	DEMA No.	Description
1	58.1LA	Vacuum Breaker, Plastic
	61.93	Vacuum Breaker, Brass
2	58.103.2	Straight Fitting – Plastic VB
	58.53.8	Straight Fitting – Brass VB
3	85.22.15	Male Elbow – Plastic VB
	58.54.4	Male Elbow – Brass VB
4	41783.1	Bent Inlet Tube
5	41938.1	Viking Rinse Bowl
6	58.400.2	Nut, Nylon, 1/2" NPT
7	58.400.1	Nut, Nylon, 1/4" NPT
8	42018.1	Viking Rinse Bowl Lid

Item No.	DEMA No.	Description
9	58.137.1	Threaded Connector
10	42020.1	Float Switch
11	42019.1	Viking Rinse Bowl Cup
12	30.5.14	O-Ring Seal, EP.
13	58.103.2	Straight JG fitting 1/4" OD x 1/4" NPT
14	41907.1	Rinse Bowl Valve Bracket
15	44.116.1	#8 x 1/2" Hi/Lo Screw
16	58.103.1	Straight JG fitting, 1/4" OD x 1/8" NPT
17	41909.1	1/8" NPT Direct Acting NC valve, 24VDC
18	41908.1	M3 x 6mm Panhead Machine Screw, SS
19	24575.50	LLDPE Tubing, 12" long



Warranty

Merchandise Returns

No merchandise will be returned for credit without DEMA'S written permission. Returned merchandise authorization number is required in advance of return.

Product Warranty

DEMA products are warranted against defective material and workmanship under normal use and service for one year from the date of manufacture. This limited warranty does not apply to any products that have a normal life shorter than one year or failure and damage caused by chemicals, corrosion, physical abuse, or misapplication. Rubber and synthetic rubber parts such as "O"-rings, diaphragms, PVC tubing, and gaskets are considered expendable and are not covered under warranty. This warranty is extended only to the original buyer of DEMA products. If products are altered or repaired without prior approval of DEMA, this warranty is void.

Defective units or parts should be returned to the factory with transportation prepaid. If inspection shows them to be defective, they will be repaired or replaced without charge, F.O.B. factory. DEMA assumes no liability for damages. Return merchandise authorization number must be granted in advance of returned units for repair or replacement (See "Merchandise Returns" above), to return units for repair or replacement, must be granted in advance of return.